



V2R C BI-MODE OHL MAINTENANCE ROAD-RAIL VEHICLE

*Engineered for on-track performance and
efficient urban networks catenary maintenance*



Safe and performant solution for urban catenary maintenance and adjustments

Bi-mode motorization for cleaner and quieter operation

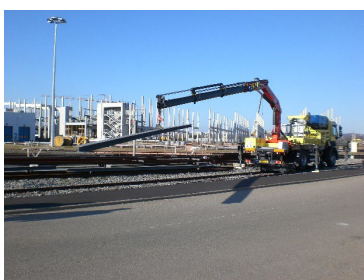
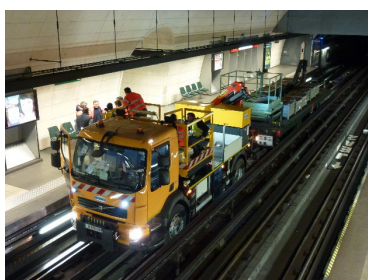
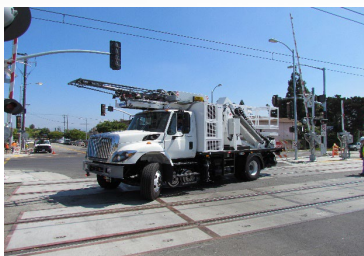
Bogie technology and safe on-tracking

Easy handle of railway equipment



Your benefits

- Respect of most demanding standards, even in cities (Crit'Air 1, EN 280)
- Bi-mode vehicle running on natural gas or electricity offering a significant reduction in noise and pollutant emissions allowing night work, even in dense areas
- Designed for the maintenance of overhead lines in national or urban networks, all year round
- Ergonomic follow-up on tactile screen of safe on/off-tracking
- Find easily spare parts worldwide (Renault / Man / Volvo)



Specifications of the chassis

Engine(s)	<ul style="list-style-type: none"> • GNV Euro 6 (320 hp) • Electric (on battery)
Autonomy	<ul style="list-style-type: none"> • Thermal engine: 250 mi. (400 km) • Electric engine: 2h
GVWR	18 t or 26 t
Track gauge	56 in. 1,435 mm
Rail transmission	Front axle or bogie and rear bogies
Maximum cant	6.3 in. (160 mm)
Maximum rail gradient	6 %
Maximum road gradient	40 %
Minimum curve radius	66 ft. (20 m)
Maximum road speed	56 mph (90 km/h)
Maximum rail speed	25 mph (40 km/h)
Maximum working speed	3 mph (5 km/h)

Specifications

Platform	<ul style="list-style-type: none"> • Max. load: 1 t on axis and 1,102 lbs (500 kg) static mode • Useable area: 8m² (14 x 6.6 ft.) • Rotation: 220° • Lateral offset: 14.8 ft. (4.50 m) • Max. height: 18 ft. (5.50 m) to the floor
Equipment storage boxes	<ul style="list-style-type: none"> • 5 storage boxes, 124 lbs (500 kg) max. load each • Total max load. : 1.06 t

Options

- Grounding pantograph
- Catenary measuring system
- Snow blade
- Trailer for light equipment or unrolling kits
- Tow bar for troubleshooting trains
- Hydraulic supply and emergency functions
- Bi-mode motorization (electric/thermal) for tunnels