

TRACK BRUSH TOOL FOR ROAD-RAIL LOADER & EXCAVATOR

BRV

*A range of accessories
for all of your works*



Ensure an efficient cleaning of all the track

Maximum productivity

Safe and ergonomics

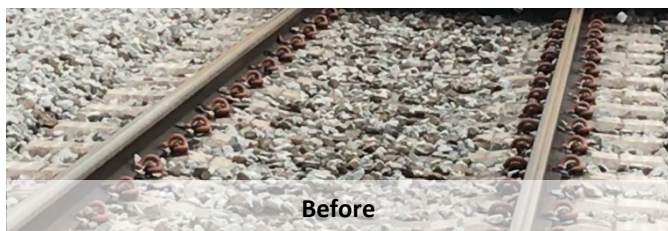


TRACK BRUSH TOOL FOR ROAD-RAIL LOADER & EXCAVATOR

BRV

Your benefits

- Performant brushing and cleaning of all the track in a one passage (sleepers and fastenings)
- Convenient operation thanks to possibility to evacuate safely the ballast to right or the left side
- Specially designed to facilitate maintenance operations, in the workshop and on site



Before

Specifications

Track gauge	From 914 to 1,676 mm (36 to 66 in.)
Circulation gauge *	UIC 505-1
Dimensions * (L x W x H)	2,500 x 3,210 x 1 283 mm (98 x 126 x 51 in.)
Mass	2,400 kg (5,291 lbs)
Working speed	0.5 to 1 kph
Maximum flow rate	65 m ³ /h
Depth stroke of the brush	250 mm (9.8 in.)
Output	Up to 6 cm of brushed ballast at 1 kph

* Data that can be adapted to your constraints

Consumables

- Complete brush axle replacement
- Brush tubes (hollow or thick-walled)

Option

- Mobile generator set (GEM 55)

Other accessories for road-rail loaders

- Tamping units (MB2 TL, MB8 AC)
- Sleeper replacer module (OST)
- Sleeper spacing or rail handing beams (PTV, PTC)
- Ballast undercutter (ODB)



After